



THE COMMONAGE
AT PREDATOR RIDGE

318 GRANGE DRIVE
COMMONAGE RANCHER



Convenient and easy one-level living in this 2 bedroom plus den, 2 bathroom, semi-detached home in the new Commonage neighbourhood. The home features a stunning vaulted ceiling and large windows.

Other features in the Rancher series of homes include:

- Engineered hardwood in the living room, kitchen and dining room
- Heated underfloor tile in the ensuite
- Tiled showers and tiled tub surrounds
- Solid surface counters in the kitchen and ensuite
- Cabinetry with soft close drawers and doors
- Stainless KitchenAid® kitchen appliances including dual fuel range
- 36" Gas fireplace
- Gas BBQ hook-up on the rear patio
- Metal / laminated glass garage door

For more information, please call 250.503.1739 or drop by the Real Estate Sales Centre.

Bedrooms: 2 + den

Bathrooms: 2

Completed Square Footage: 1,489 square feet

PRICE: \$675,000



WESBILD
HOMES

Prices do not include applicable taxes. The Developer reserves the right to make changes without notice. Measurements are approximate and may vary. Buyer to verify if deemed important. Subject to availability. E.&O.E. November 3, 2017



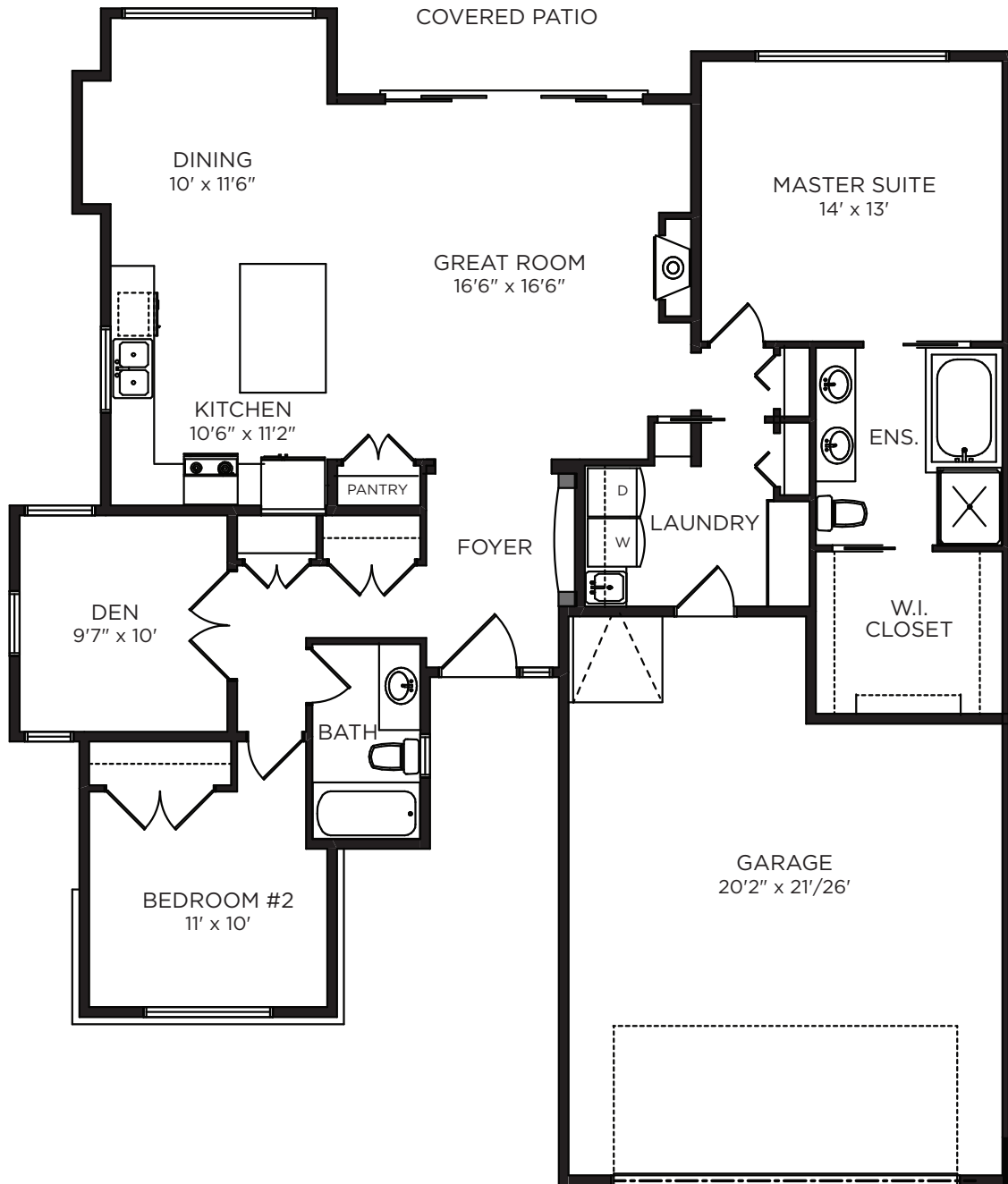
THE COMMONAGE
AT PREDATOR RIDGE

318 GRANGE DRIVE
COMMONAGE RANCHER

Main Level

1,489 sq. ft.

507 sq. ft. (garage)



Prices do not include applicable taxes. The Developer reserves the right to make changes without notice. Measurements are approximate and may vary. Buyer to verify if deemed important. Subject to availability. E.&O.E. November 3, 2017