



PREDATOR RIDGE
outlook

 PREDATOR RIDGE  WESBILD

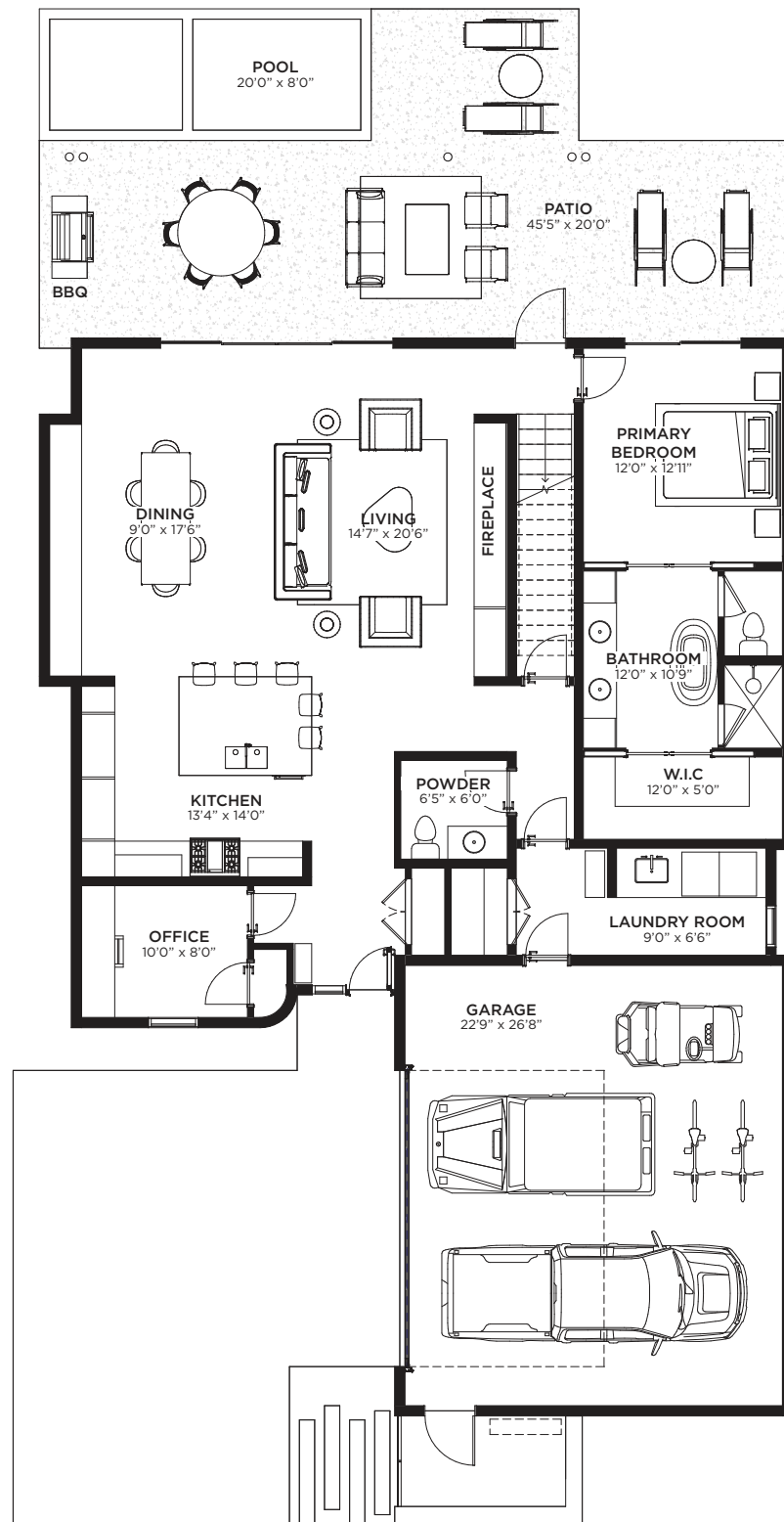
Register at PredatorRidge.com/Outlook


Big Horn



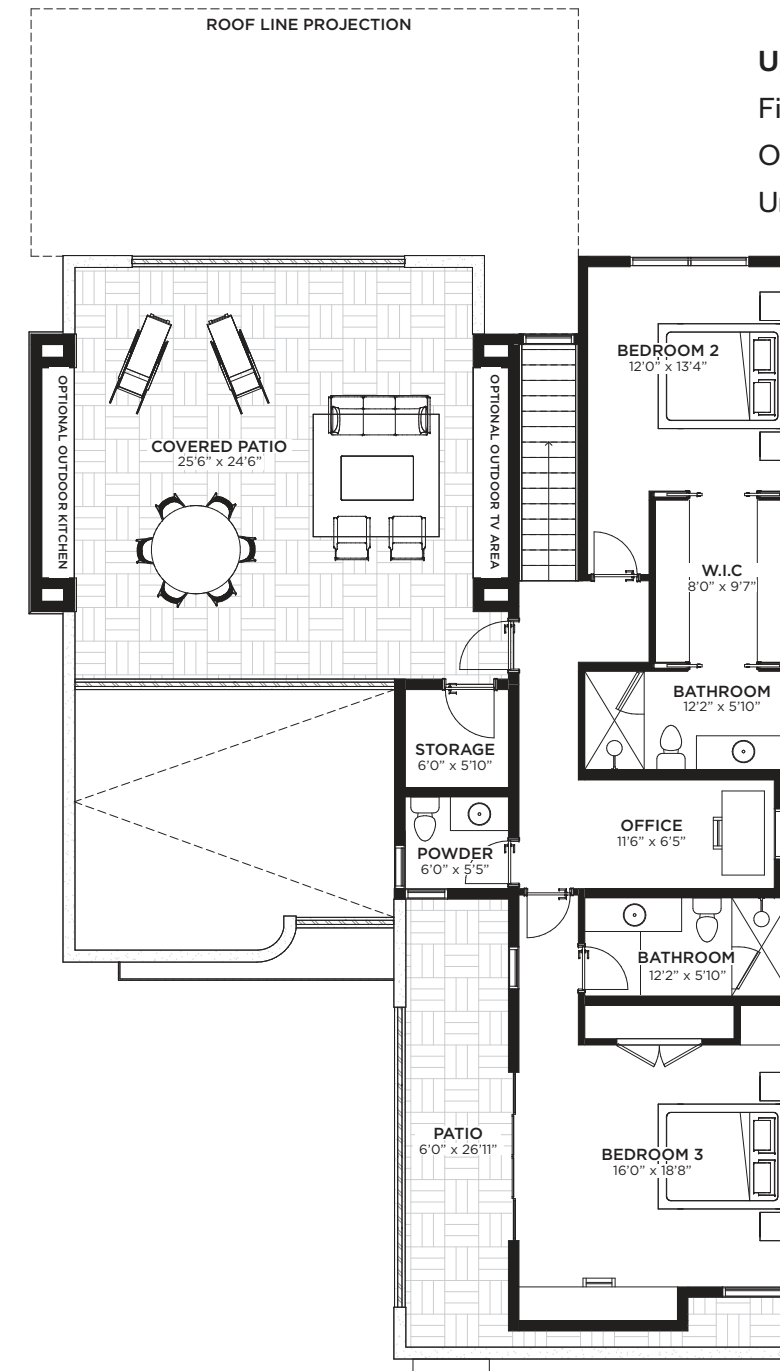
Main Level

Finished Indoor Living	1,731 sq. ft.
Outdoor Living	806 sq. ft.
Garage	671 sq. ft.



Upper Level

Finished Indoor Living	1,153 sq. ft.
Outdoor Living	845 sq. ft.
Unfinished/Storage/Mech	-



HOME SPECS

Bedrooms	3
Bathrooms	4
Garage	2 Car

Finished Indoor Living	2,884 sq. ft.
Outdoor Living	1,651 sq. ft.
Garage	671 sq. ft.
Unfinished/Storage/Mech	-
Total Square Footage	5,206 sq. ft.

BIG HORN FEATURES A STUNNING ROOFTOP TERRACE WITH UNIMPEDED VIEWS OF OKANAGAN LAKE AND IS OUR LARGEST PATIO HOME. THIS PLAN FEATURES:

- An oversized garage with golf cart storage and solar ready upgrades that make charging your electric car, e-bike, or golf cart a breeze.
- An office on the south side of the home which provides the ideal work from home location.
- An oversized 8'x6' island with ample seating that makes the kitchen the heart of this home.
- 16' wide x 8' tall sliding doors that provide panoramic views from the great room, with clerestory windows above that allow light deep into the home.
- The great room flows directly out onto a covered patio at grade, which is the ideal place to entertain, lounge or sunbathe beside an optional in-ground pool.
- Patio doors that allow you to wake up to Okanagan Lake views from your full-size master suite.
- Expansive double master suites on the upper level.
- A rooftop terrace that makes a great place for relaxing, or a sophisticated place for entertaining with optional outdoor kitchen and entertainment centre upgrades.
- A crawl space that is easily accessed from inside the home to for ample extra storage.